

1ST READING  
2ND READING  
INDEX NO.

8-12-08  
8-19-08  
\_\_\_\_\_

2008-094 - Revised  
Dennis Neal  
Habitat for Humanity

ORDINANCE NO. 12151

AN ORDINANCE TO AMEND ORDINANCE NO. 6958, AS AMENDED, KNOWN AS THE ZONING ORDINANCE, SO AS TO REZONE A TRACT OF LAND LOCATED IN THE 2300 BLOCK OF EAST 19<sup>TH</sup> STREET, MORE PARTICULARLY DESCRIBED HEREIN AND AS SHOWN ON THE MAPS ATTACHED HERETO AND MADE A PART HEREOF BY REFERENCE, FROM M-2 LIGHT INDUSTRIAL ZONE TO R-1 RESIDENTIAL ZONE.

SECTION 1. BE IT ORDAINED BY THE CITY COUNCIL OF THE CITY OF CHATTANOOGA, TENNESSEE, That Ordinance No. 6958, as amended, known as the Zoning Ordinance, be and the same hereby is amended so as to rezone:

Lots 17 thru 20, Block B, Brock's Addition Number 2 to Ridgedale, Plat Book 5, Page 20, ROHC, Deed Book 6765, Page 571, ROHC. Tax Map 156G-G-003.

from M-2 Light Industrial Zone to R-1 Residential Zone.

SECTION 2. BE IT FURTHER ORDAINED, That this Ordinance shall take effect two (2) weeks from and after its passage.

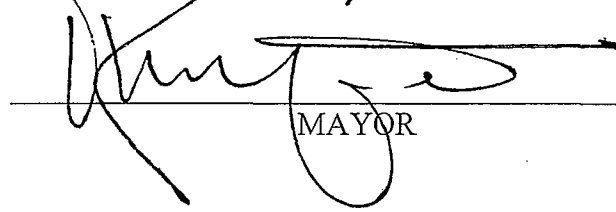
PASSED on Second and Final Reading

August 19, 2008.

  
CHAIRPERSON

APPROVED:   x   DISAPPROVED:       

DATE: 8/21, 2008

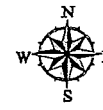
  
MAYOR

/add

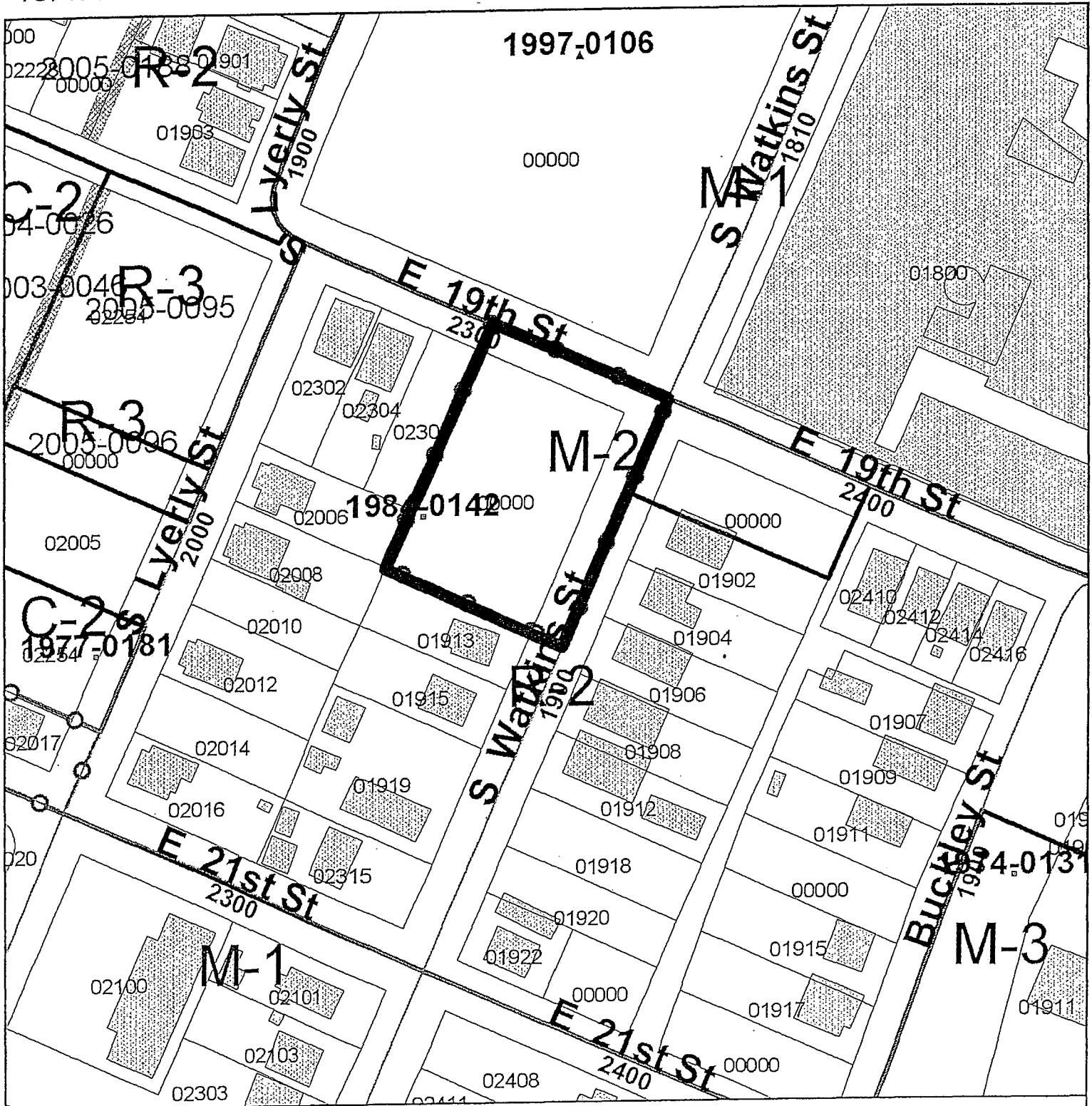
CHATTANOOGA - HAMILTON COUNTY REGIONAL  
PLANNING AGENCY



CHATTANOOGA  
CASE NO: 2008-0094  
PC MEETING DATE: 7/14/2008  
FROM: M-2  
TO: R-1



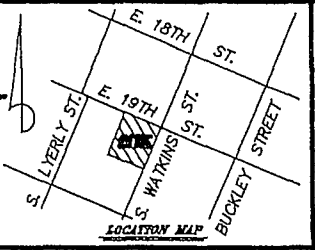
1 in. = 110.0 feet



PLANNING COMMISSION RECOMMENDATION

Approve

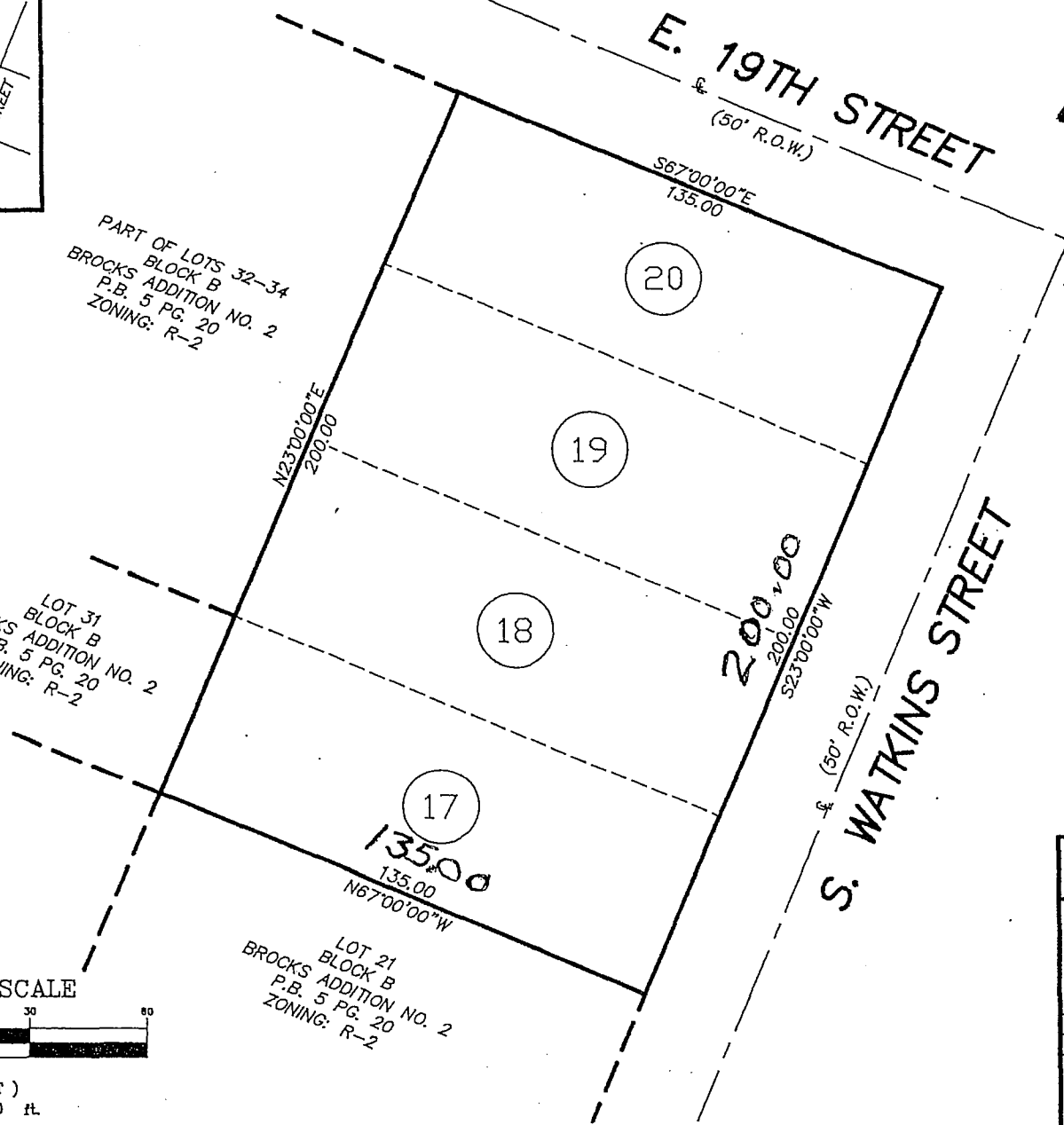
2008-094



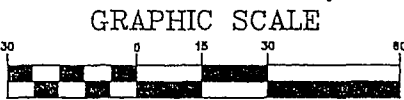
PART OF LOTS 32-34  
BLOCK B  
BROCKS ADDITION NO. 2  
P.B. 5 PG. 20  
ZONING: R-2

LOT 31  
BLOCK B  
BROCKS ADDITION NO. 2  
P.B. 5 PG. 20  
ZONING: R-2

LOT 21  
BLOCK B  
BROCKS ADDITION NO. 2  
P.B. 5 PG. 20  
ZONING: R-2



TAX MAP NO.: 156G-G-3  
0.62±ACRES  
PRESENT ZONING: M-2  
REQUESTED ZONING: R-2



( IN FEET )  
1 inch = 30 ft.

ZONING MAP		
HABITAT FOR HUMANITY OF GREATER CHATTANOOGA AREA INC.		
LOTS 17-20 BLOCK B BROCKS ADDITION NO. .		
PLAT BOOK 5 PAGE 20		
CHATTANOOGA, HAMILTON COUNTY, TENNESSEE		
Date: 4-2-2008	Drawn: BOON	Job#: 08-858
Scale: 1" = 30'	Checked: DLM	
DAVID MATHEWS SURVEYING		
1820 HAMILL ROAD CHATTANOOGA, TENN. 37313 423-870-4208		
		FOLDER