

1<sup>ST</sup> READING  
2<sup>ND</sup> READING

7-17-12  
7-24-12

MR-2011-101  
Ian Grant  
c/o Sartin & Grant GP  
District 7

ORDINANCE NO. 12633

AN ORDINANCE CLOSING AND ABANDONING OF A PORTION OF THE 400 BLOCK OF WEST 22<sup>ND</sup> STREET FROM THE 2100 BLOCK OF BROAD STREET WITH EPB, CHATTANOOGA GAS, AND AT&T TO MAINTAIN THE EASEMENT IN THE FULL WIDTH, MORE PARTICULARLY DESCRIBED HEREIN, SUBJECT TO CERTAIN CONDITIONS.

---

SECTION 1. BE IT ORDAINED BY THE CITY COUNCIL OF THE CITY OF CHATTANOOGA, TENNESSEE, That a portion of the 400 block of West 22<sup>nd</sup> Street from the 2100 block of Broad Street with EPB, Chattanooga Gas, and AT&T to maintain the easement in the full width, more particularly described herein, subject to certain conditions, and as shown on the maps and drawing attached hereto and made a part hereof by reference, be and is hereby closed and abandoned:

Abandonment of a portion of the 400 block of West 22<sup>nd</sup> Street beginning at its intersection with the west line of the 2100 block of Broad Street thence northwest some 120 feet to the east line of an unnamed alley. Said portion of said street separates an unplatted tract of land located at 2121 Broad Street from another unplatted tract of land located at 2201 Broad Street being Tax Map Nos. 145N-B-008 and 009.

Abandonment of a portion of an unnamed alley beginning at its intersection with the north line of the Interstate 24 right-of-way thence some 210 feet northeast to the northwest corner of Tax Map 145N-B-008. Said alley separates Tax Map Nos. 145N-B-008 from 145N-B-011.

SECTION 2. BE IT FURTHER ORDAINED, That this closure and abandonment shall

be subject to the following:

- 1) Subject to the retention of all sanitary sewer, stormwater, and utility easements and routing rights;
- 2) Subject to an approved circulation plan as per the City Traffic Engineer;
- 3) Subject to no parking along Broad Street; and
- 4) Subject to no gate within the 25 feet portion of the W. 22<sup>nd</sup> Street right-of-way.

SECTION 3. BE IT FURTHER ORDAINED, That this Ordinance shall take effect two

(2) weeks from and after its passage.

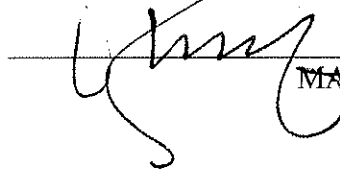
PASSED on Second and Final Reading

July 24, 2012.

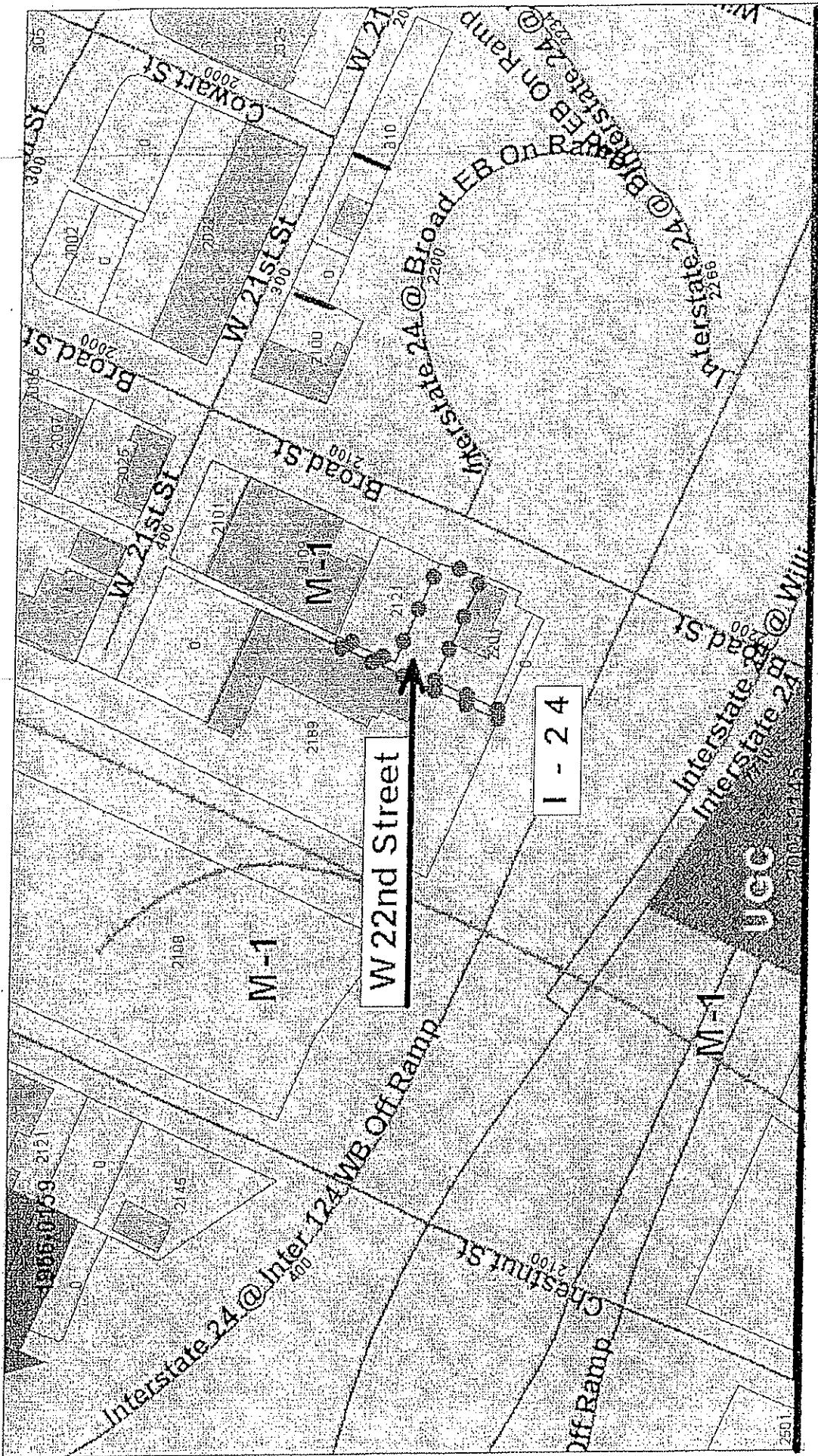
  
CHAIRPERSON

APPROVED:  DISAPPROVED:

DATE: July 25, 2012.

  
MAYOR

/mms



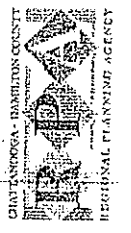
PLANNING COMMISSION RECOMMENDATION FOR CASE NO. 2011-101: Approve, subject to certain conditions as listed in the Planning Commission Resolution.



# 2011-0101 Abandon Street and Alley ROW

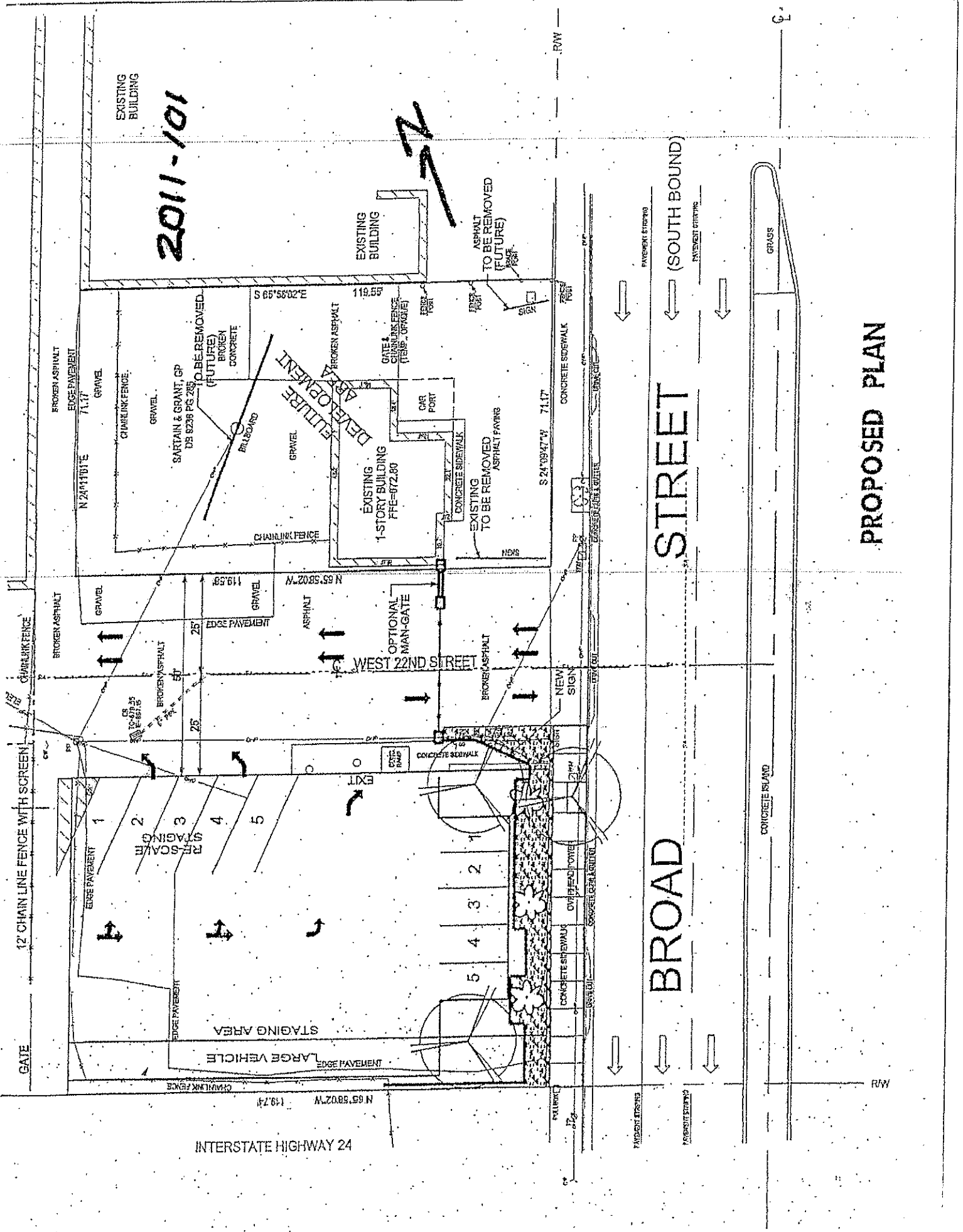


1 in. = 150.0 feet



Chattanooga - Hamilton County Regional Planning Agency

2011-101



BROAD STREET (SOUTH BOUND)

BROAD STREET

PROPOSED PLAN

INTERSTATE HIGHWAY 24

GRAVEL

CONCRETE ISLAND

RAW

RAW

GATE

EXISTING BUILDING

EXISTING BUILDING

ASPHALT TO BE REMOVED (FUTURE)

EXISTING 1-STORY BUILDING

WEST 22ND STREET

BROAD STREET

SARTAIN & GRANT, GP DS 8238 PS 285 TO BE REMOVED (FUTURE)

DEVELOPMENT AREA

STAGING AREA  
LARGE VEHICLE

EXIT

NEW SIGN

PAVEMENT STRIPING

PAVEMENT STRIPING

BROKEN ASPHALT

EDGE PAVEMENT

GRAVEL

CHAINLINK FENCE

GRAVEL

GRAVEL

GRAVEL

GRAVEL

GRAVEL

GRAVEL

GRAVEL

GRAVEL

GRAVEL

GRAVEL

GRAVEL

GRAVEL

GRAVEL

GRAVEL

GRAVEL

GRAVEL

GRAVEL

GRAVEL

GRAVEL

GRAVEL

GRAVEL

GRAVEL

GRAVEL

GRAVEL

GRAVEL

GRAVEL

GRAVEL

BROKEN ASPHALT

EDGE PAVEMENT

GRAVEL

CHAINLINK FENCE

GRAVEL

GRAVEL

GRAVEL

GRAVEL

GRAVEL

GRAVEL

GRAVEL

GRAVEL

GRAVEL

GRAVEL

GRAVEL

GRAVEL

GRAVEL

GRAVEL

GRAVEL

GRAVEL

GRAVEL

GRAVEL

GRAVEL

GRAVEL

GRAVEL

GRAVEL

GRAVEL

GRAVEL

GRAVEL

GRAVEL

GRAVEL

BROKEN ASPHALT

EDGE PAVEMENT

GRAVEL

CHAINLINK FENCE

GRAVEL

GRAVEL

GRAVEL

GRAVEL

GRAVEL

GRAVEL

GRAVEL

GRAVEL

GRAVEL

GRAVEL

GRAVEL

GRAVEL

GRAVEL

GRAVEL

GRAVEL

GRAVEL

GRAVEL

GRAVEL

GRAVEL

GRAVEL

GRAVEL

GRAVEL

GRAVEL

GRAVEL

GRAVEL

GRAVEL

GRAVEL

BROKEN ASPHALT

EDGE PAVEMENT

GRAVEL

CHAINLINK FENCE

GRAVEL

GRAVEL

GRAVEL

GRAVEL

GRAVEL

GRAVEL

GRAVEL

GRAVEL

GRAVEL

GRAVEL

GRAVEL

GRAVEL

GRAVEL

GRAVEL

GRAVEL

GRAVEL

GRAVEL

GRAVEL

GRAVEL

GRAVEL

GRAVEL

GRAVEL

GRAVEL

GRAVEL

GRAVEL

GRAVEL

GRAVEL

BROKEN ASPHALT

EDGE PAVEMENT

GRAVEL

CHAINLINK FENCE

GRAVEL

GRAVEL

GRAVEL

GRAVEL

GRAVEL

GRAVEL

GRAVEL

GRAVEL

GRAVEL

GRAVEL

GRAVEL

GRAVEL

GRAVEL

GRAVEL

GRAVEL

GRAVEL

GRAVEL

GRAVEL

GRAVEL

GRAVEL

GRAVEL

GRAVEL

GRAVEL

GRAVEL

GRAVEL

GRAVEL

GRAVEL

BROKEN ASPHALT

EDGE PAVEMENT

GRAVEL

CHAINLINK FENCE

GRAVEL

GRAVEL

GRAVEL

GRAVEL

GRAVEL

GRAVEL

GRAVEL

GRAVEL

GRAVEL

GRAVEL

GRAVEL

GRAVEL

GRAVEL

GRAVEL

GRAVEL

GRAVEL

GRAVEL

GRAVEL

GRAVEL

GRAVEL

GRAVEL

GRAVEL

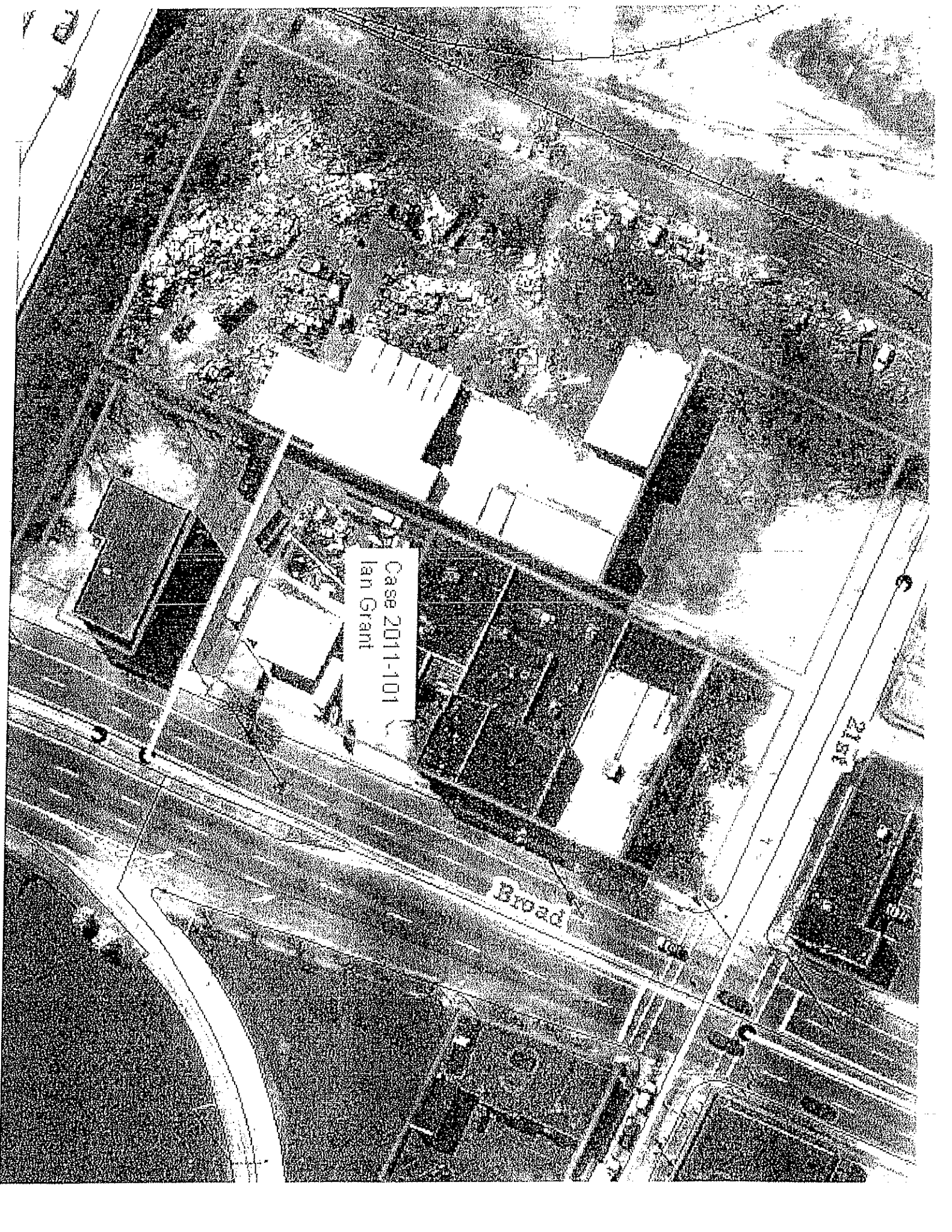
GRAVEL

GRAVEL

GRAVEL

GRAVEL

GRAVEL



Case 2011-101  
Ian Grant

Broad

2157