

First Reading: April 17, 2018
Second Reading: April 24, 2018

2018-035
Ronnie Rothwell
District No. 1
Alternate Version

ORDINANCE NO. 13303

AN ORDINANCE TO AMEND CHATTANOOGA CITY CODE, PART II, CHAPTER 38, ZONING ORDINANCE, SO AS TO REZONE PROPERTY LOCATED IN THE 500 BLOCK OF MAY STREET, MORE PARTICULARLY DESCRIBED HEREIN, FROM R-1 RESIDENTIAL ZONE TO E-RA-2 RESIDENTIAL ATTACHED ZONE, SUBJECT TO CERTAIN CONDITIONS, SPECIFICALLY SINGLE-FAMILY DETACHED ONLY.

SECTION 1. BE IT ORDAINED BY THE CITY COUNCIL OF THE CITY OF CHATTANOOGA, TENNESSEE, That Chattanooga City Code, Part II, Chapter 38, Zoning Ordinance, be and the same hereby is amended so as to rezone property located in the 500 block of May Street, more particularly described herein:

Lot 10, Revised Plat of Lot 10, Block 1, Mannings Subdivision, Plat Book 62, Page 200, ROHC, being the property described as Tract 2 in Deed Book 2446, Page 737, ROHC. Tax Map No. 135C-S-007.

and as shown on the maps attached hereto and made a part hereof by reference, from R-1 Residential Zone to E-RA-2 Residential Attached Zone.

SECTION 2. BE IT FURTHER ORDAINED, That this Ordinance shall be subject to specifically single-family detached only.

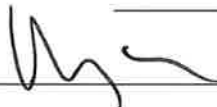
SECTION 3. BE IT FURTHER ORDAINED, That this Ordinance shall take effect two
(2) weeks from and after its passage.

Passed on second and final reading: April 24, 2018



CHAIRPERSON

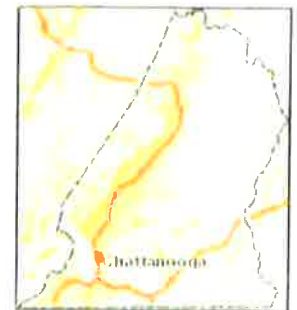
APPROVED: DISAPPROVED:



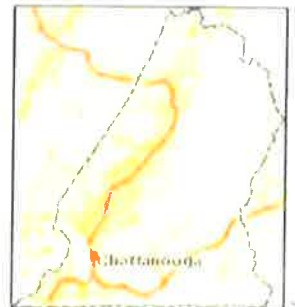
MAYOR

/mem

2018-0035 Rezoning from R-1 to E-RA-3



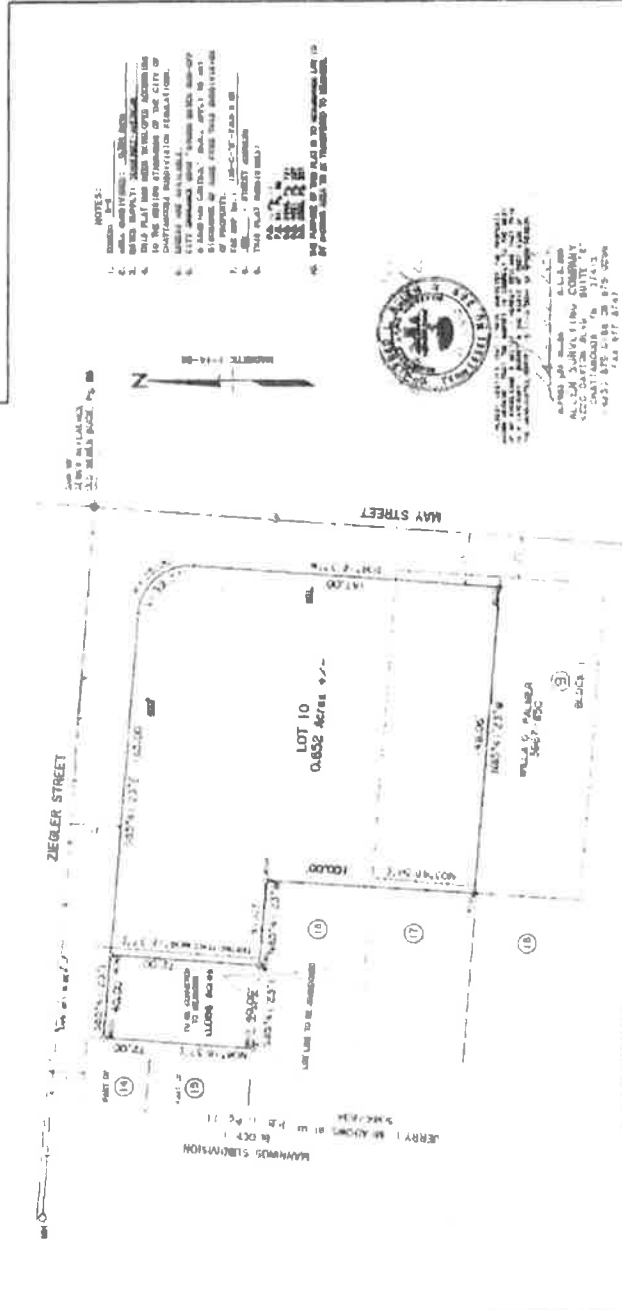
2018-0035 Rezoning from R-1 to E-RA-3



APPROVED FOR RECORDING
 AUGUST 14, 1989
 CHATTAHOOCHEE COUNTY



LOCATOR MAP OUTLINES



REARWALL SUBDIVISION
LOT 10 - BLOCK 1
 CHATTAHOOCHEE COUNTY
 LOCATED IN THE FIRST CIVIL DISTRICT
 CHATTAHOOCHEE COUNTY, GA.
 NOVEMBER 23, 1888 JOB NO. 480-6

GENERAL CERTIFICATION

I, the undersigned, being a duly qualified and sworn surveyor of the State of Georgia, do hereby certify that the foregoing is a true and correct copy of the original of the plat as shown to me by the owner of the property shown on the plat, and that the same is in accordance with the laws of the State of Georgia.

[Signature]
 Surveyor

SCALE: 1"=50'

- NOTES:**
1. THIS PLAT IS A RE-PLAT OF THE REARWALL SUBDIVISION, CHATTAHOOCHEE COUNTY, GEORGIA, AS SHOWN ON PLAT 5, PALMERA, 3867 600, DATED OCTOBER 1, 1988.
 2. THIS PLAT IS A RE-PLAT OF THE REARWALL SUBDIVISION, CHATTAHOOCHEE COUNTY, GEORGIA, AS SHOWN ON PLAT 5, PALMERA, 3867 600, DATED OCTOBER 1, 1988.
 3. THIS PLAT IS A RE-PLAT OF THE REARWALL SUBDIVISION, CHATTAHOOCHEE COUNTY, GEORGIA, AS SHOWN ON PLAT 5, PALMERA, 3867 600, DATED OCTOBER 1, 1988.
 4. THIS PLAT IS A RE-PLAT OF THE REARWALL SUBDIVISION, CHATTAHOOCHEE COUNTY, GEORGIA, AS SHOWN ON PLAT 5, PALMERA, 3867 600, DATED OCTOBER 1, 1988.
 5. THIS PLAT IS A RE-PLAT OF THE REARWALL SUBDIVISION, CHATTAHOOCHEE COUNTY, GEORGIA, AS SHOWN ON PLAT 5, PALMERA, 3867 600, DATED OCTOBER 1, 1988.
 6. THIS PLAT IS A RE-PLAT OF THE REARWALL SUBDIVISION, CHATTAHOOCHEE COUNTY, GEORGIA, AS SHOWN ON PLAT 5, PALMERA, 3867 600, DATED OCTOBER 1, 1988.
 7. THIS PLAT IS A RE-PLAT OF THE REARWALL SUBDIVISION, CHATTAHOOCHEE COUNTY, GEORGIA, AS SHOWN ON PLAT 5, PALMERA, 3867 600, DATED OCTOBER 1, 1988.
 8. THIS PLAT IS A RE-PLAT OF THE REARWALL SUBDIVISION, CHATTAHOOCHEE COUNTY, GEORGIA, AS SHOWN ON PLAT 5, PALMERA, 3867 600, DATED OCTOBER 1, 1988.
 9. THIS PLAT IS A RE-PLAT OF THE REARWALL SUBDIVISION, CHATTAHOOCHEE COUNTY, GEORGIA, AS SHOWN ON PLAT 5, PALMERA, 3867 600, DATED OCTOBER 1, 1988.
 10. THIS PLAT IS A RE-PLAT OF THE REARWALL SUBDIVISION, CHATTAHOOCHEE COUNTY, GEORGIA, AS SHOWN ON PLAT 5, PALMERA, 3867 600, DATED OCTOBER 1, 1988.



REARWALL SUBDIVISION
 CHATTAHOOCHEE COUNTY, GEORGIA
 PLAT 5, PALMERA
 3867 600
 DATED OCTOBER 1, 1988

STREET
MAY



2018-0035 Rezoning from R-1 to E-RA-3



PLANNING COMMISSION RECOMMENDATION
FOR CASE NO. 2018 035: Approve E RA-2

