

First Reading: August 10, 2021
Second Reading: August 17, 2021

2021-0111
Pond Holding MLK @ Palmetto
Series 4 LLC c/o Skip Pond
District No. 8
Planning Version

ORDINANCE NO. 13706

AN ORDINANCE TO AMEND CHATTANOOGA CITY CODE, PART II, CHAPTER 38, ZONING ORDINANCE, SO AS TO REZONE PROPERTIES LOCATED IN THE 700 BLOCK OF EAST MARTIN LUTHER KING BOULEVARD, FROM U-RA-3 URBAN RESIDENTIAL ATTACHED 3-STORY ZONE TO U-CX-3 URBAN COMMERCIAL MIXED USE 3-STORY ZONE.


SECTION 1. BE IT ORDAINED BY THE CITY COUNCIL OF THE CITY OF CHATTANOOGA, TENNESSEE, That Chattanooga City Code, Part II, Chapter 38, Zoning Ordinance, be and the same hereby is amended so as to rezone properties located in the 700 block of East Martin Luther Boulevard, more particularly described herein:

Part of Lots 12 thru 14, Plat of Key and Richmond's Addition to Chattanooga, as shown in Book P, Volume 2, Page 230, ROHC and being the properties described in Deed Book 10952, Page 593, and Tracts 1 and 2 of Deed Book 10973, Page 128, ROHC. Tax Map Numbers 146H-B-016 and 017.

and as shown on the maps attached hereto and made a part hereof by reference, from U-RA-3 Urban Residential Attached 3-Story Zone to U-CX-3 Urban Commercial Mixed Use 3-Story Zone.

SECTION 2. BE IT FURTHER ORDAINED, That this Ordinance shall take effect two (2) weeks from and after its passage.

Passed on second and final reading: August 17, 2021



CHAIRPERSON
APPROVED: DISAPPROVED:



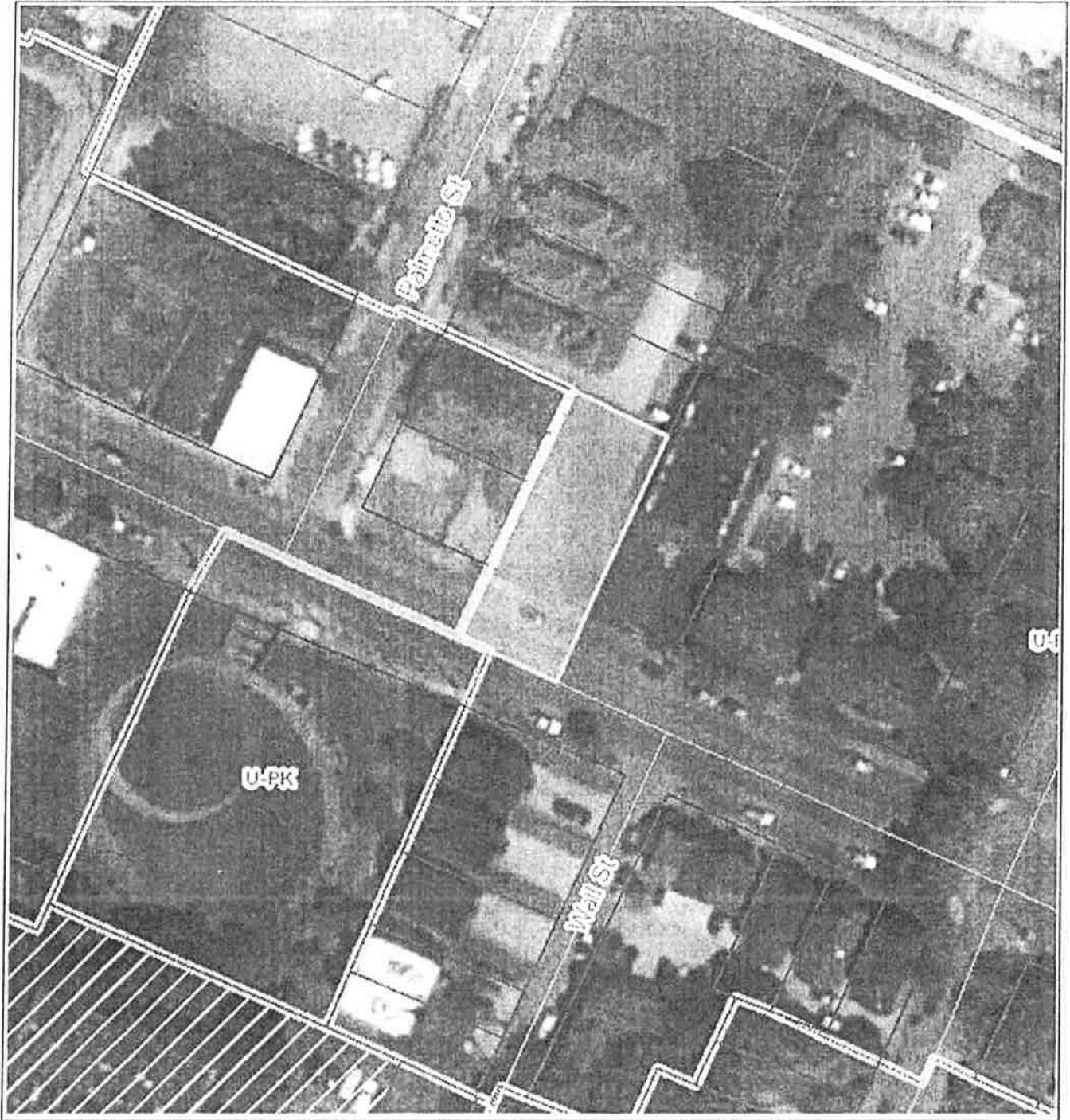
MAYOR

/mem

2021-0111 Rezoning from U-RA-3 to U-CX-3



2021-0111 Rezoning from U-RA-3 to U-CX-3



1. This drawing is a preliminary drawing and is not to be used for construction purposes. It is subject to change without notice.

C. FLAVY | K. K. P. Architects Inc.
 DATE: 02/20/2018
 PROJECT: MLK & PALMETTO

PROJECT NOTES

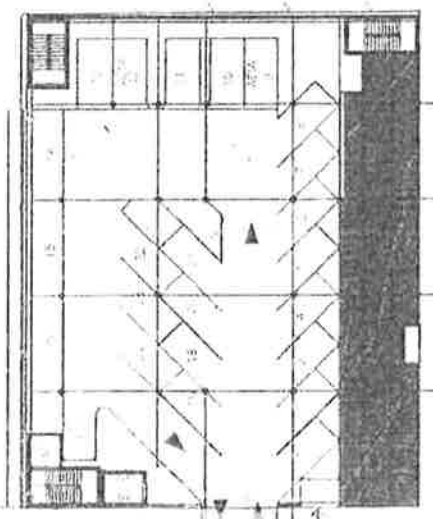
1. CHANGE SHEET NO. 01: REVISIONS TO THE ARCHITECTURAL DRAWINGS TO REFLECT THE REVISIONS TO THE ZONING REQUEST.

2. ALL DIMENSIONS ARE IN FEET AND INCHES. DIMENSIONS ARE SHOWN TO THE CENTERLINE UNLESS OTHERWISE NOTED.

3. ALL FINISHES ARE TO BE DETERMINED BY THE ARCHITECT.

4. ALL MATERIALS AND METHODS OF CONSTRUCTION SHALL BE APPROVED BY THE ARCHITECT.

5. ALL DIMENSIONS ARE TO THE CENTERLINE UNLESS OTHERWISE NOTED.



GARAGE LEVEL

MARTIN LUTHER KING JR. BLVD.

PALMETTO



elemi
 ARCHITECTS
 1000 ...

MLK & PALMETTO MIXED USE

REZONING REQUEST

SCALE: 1/8" = 1'-0"

A1.0

