

**First Reading: April 26, 2022**  
**Second Reading: May 3, 2022**

ORDINANCE NO. 13815

AN ORDINANCE REAPPORTIONING AND REDISTRICTING  
THE NINE (9) DISTRICTS FOR CITY COUNCIL.

---

**WHEREAS**, pursuant to City Charter Title 8, Section 8.9, Redistricting, following publication of each new official decennial federal census, the Council shall reorganize and adjust by ordinance the boundaries of the districts currently established; and

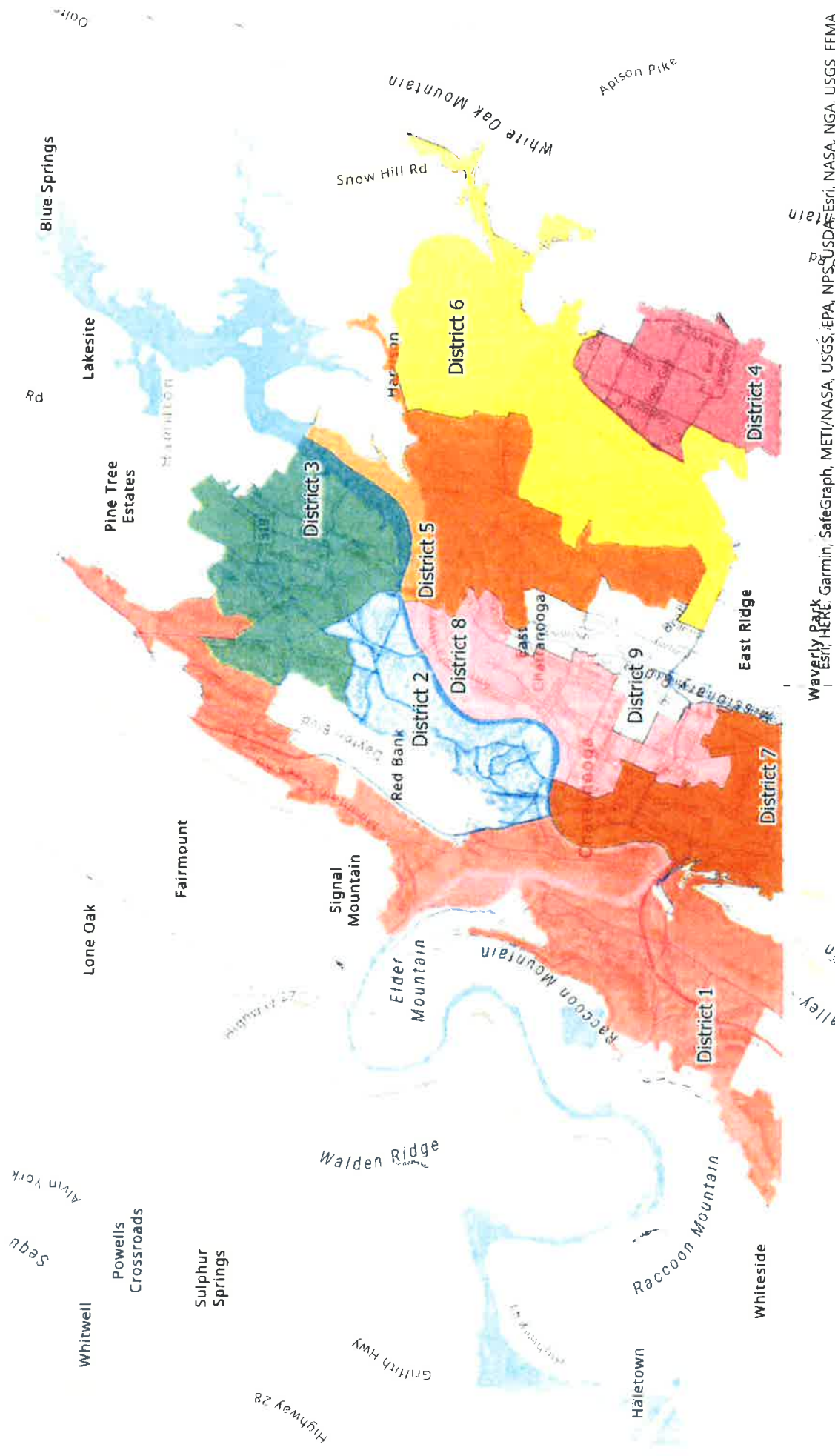
**WHEREAS**, the Council's reorganization and adjustment of the district boundaries shall be completed no later than one (1) year prior to the next city election; provided, however, that the Council shall have not less than six (6) calendar months within which to reorganize the districts; and

**WHEREAS**, the Council has held a number of public meetings and received data input from City staff which indicates that the adjusted districts shall be as equal in population as practicable. Such reorganization and adjustment of district boundaries shall not affect the qualifications of any council member to fulfill his or her remaining unexpired term as set forth in the City Charter.

NOW, THEREFORE,

SECTION 1. BE IT ORDAINED BY THE CITY COUNCIL OF THE CITY OF CHATTANOOGA, TENNESSEE, That the nine (9) districts for City Council be and are hereby reapportioned and redistricted as required following the 2020 decennial census. The adjusted district boundaries are shown on the map incorporated herein. A digital version of these adjusted district boundaries that provide map information in larger scale is on file in the Office of the City Court Clerk and is incorporated herein by reference. The statistical data for each district is set forth herein.

**[see next pages for map and statistical data]**



Waverly Park, Esri, HERE, Garmin, SafeGraph, METI/NASA, USGS, EPA, NPS, USDA, Esri, NASA, NGA, USGS, FEMA

## REDISTRICTING

### 2020 DECENNIAL FEDERAL CENSUS STATISTICAL DATA

District	District Pop	Deviation	Deviation Percent	Black Alone Pop	Black Alone %	White Population	White %
1	19,493	-629	96.77%	1,066	5.47%	16,284	83.54%
2	19,193	-929	95.16%	1,493	7.78%	15,732	81.97%
3	20,395	273	101.34%	1,598	7.84%	15,952	78.22%
4	20,807	685	103.29%	3,146	15.12%	13,731	65.99%
5	19,881	-241	98.79%	11,552	58.11%	6,432	32.35%
6	20,417	295	101.44%	5,376	26.33%	11,444	56.05%
7	20,950	823	103.93%	8,245	39.36%	8,292	39.58%
8	20,541	419	102.04%	10,307	50.18%	6,721	32.72%
9	19,422	-700	96.40%	9,907	51.01%	6,997	36.03%
Total	181,099			52,690	29.09%	101,585	56.09%

SECTION 2. BE IT FURTHER ORDAINED, That this Ordinance shall take effect immediately after its passage as required by law; however, it shall not be operative until such time as precinct boundaries can be adjusted by the Hamilton County Election Commission to implement changes in voting precincts to accommodate this reapportionment plan with its adjusted district boundaries based on the 2020 decennial federal census.

Passed on second and final reading: May 3, 2022



CHAIRPERSON

APPROVED:  DISAPPROVED:



MAYOR

PAN/mem/v2